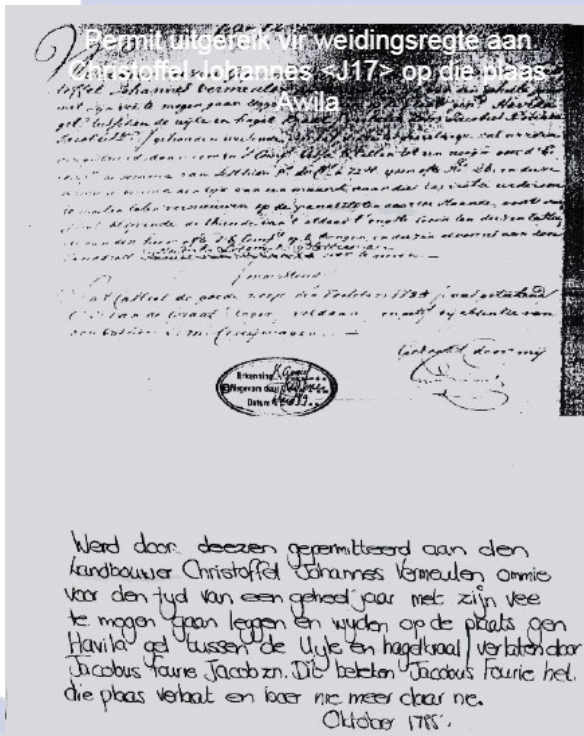


ESTABLISHMENT OF THE DESCENDANTS OF JAN WILLEMZOOM VERMEULEN

As indicated in the organigram of Jan, all of Jan's descendants come from Christoffel Johannes Vermeulen<J17> who settled on the farm Awila near Gansbaai from 1785. His three sons, Sijbrand Johannes<J20>, Christoffel Johannes <J22> and Hendrik Johannes<J27> ensured that Jan's ancestry continued and expanded. Sijbrand Johannes and Hendrik Johannes's descendants initially settled in places such as Stanford, Gansbaai, Riviersonderend, Napier and Bredasdorp in the Overberg. Christoffel Johannes's descendants settled mainly in the Karoo in places such as Hopetown, Philipstown, Strydenburg and Hanover. The name Christoffel Johannes was named 59 times in the lineage of Jan.

Today, the descendants of Jan are scattered throughout South Africa, Namibia and other countries.

The farm Awila near Gansbaai.



Ou woning op Awila (foto geneem 1996)

NON PAREIL



Murasië soos ook op Awila gevind in 1996

THE FARM Awila No 223
 BRIDASDORP

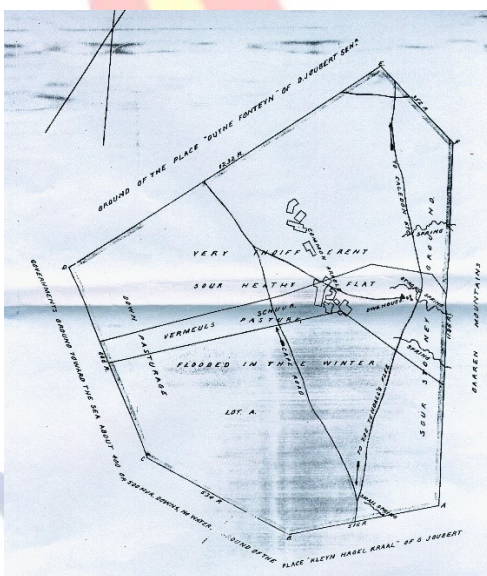
The annexed Diagram A B C D E F represents 22½ Mor. of Land situated in the District of Caledon, under the Field-Cornetcy of Uytien Kraal, being the Figure & Extent of the Place "Awila" measured for Cristoffel Johannes Vermeulen. Comprising 1820 Mor. of very indifferent heathy Flats - 400 Mor. ordinary downs & 11½ Mor. cultivated.

Bounded N by E. to W by the Place "Duyns Fonteyn" of D. Joubert Sr.;
 W to S.W by about 400 Mor. Governments Ground toward the
 Sea; Downs but no water;
 S.W to S.SE by the Place "Kleyn Hagel Kraal" of G. Joubert;
 S.SE to N.NE by Mountains-

Surveyed & planned by me
 (Sgd.) W. M. Hopley Junr.
 Sworn Surveyor.

Copied from diagram relating
 Title to Deed No Sw. Q. 6-26

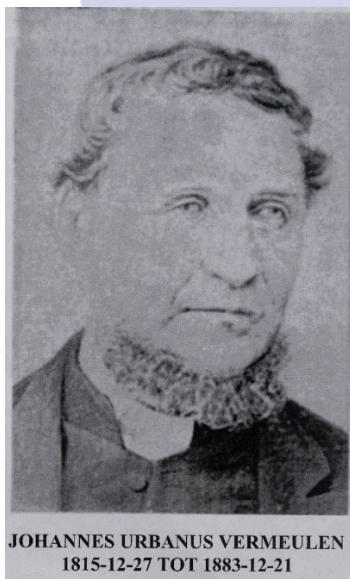
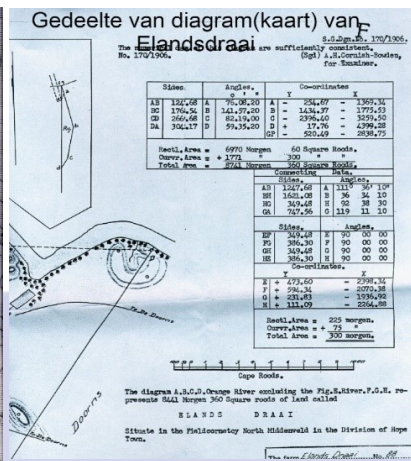
SHEET AI-68,60
 SHEET AI-5D (Inset on AI-60)



The above surveyor-general diagram with dimensions was done for Awila in 1831. The farm is transferred on 6.06.1831 to the name of Christoffel's youngest son Hendrik Johannes Vermeulen <J27> and it remained in his possession until 1881. Sijbrand Johannes <J20> farmed on Dirk Uyskraal Bredasdorp district and Hendrik Johannes <J27> later had properties in Napier.

HOPETOWN

Johannes Urbanus Vermeulen <J1461>'s father was Christoffel Johannes <J22> from Awila. He had 26 children and was married three times. He purchased the farm Elandsdraai in about 1855 and was a founding member and very involved in the creation of the town of Hopetown which developed next to Elandsdraai on the farm Duvenaarsfontein. The name John Urbanus was named 33 times in the lineage of Jan.



VLUYTJESKRAAL NEAR ORANIA

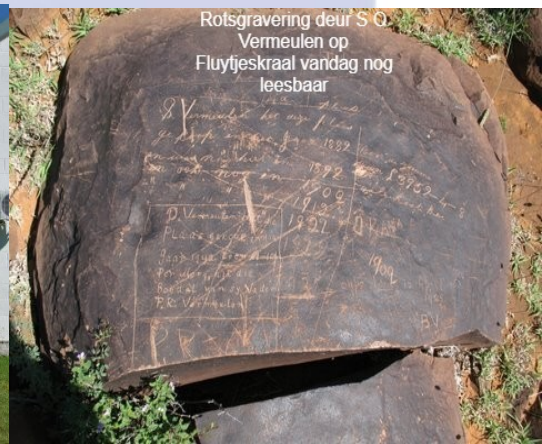
Stephanus Ockert Vermeulen<J1481> was the son of Johannes Urbanus<J1461>. He bought the farm Vluytjeskraal in 1882. A portion of the town of Orania was built on Vluytjeskraal. On the farm there is also a water pan (dam) known as Vermeulenspan.



Oorspronklike opstal soos
opgerig deur S O Vermeulen



Die oorspronklike opstal soos
verander in 2011



Rotsgraving deur S O
Vermeulen op
Fluyteskraal vandag nog
leesbaar

S O VERMEULEN immortalized the purchase of the farm on a dolerite stone as seen on the photo with the following engraving:

"S.Vermeulen bought this farm in the year 1882 for the sum of £3952-4-5
all cost included.
and was still here in 1892
and also in 1902

" " " " 1912
" " " " 1922
" " " " 23
" " " " 1924

" " " 1925 Grandfather died April 12, 1925 B.V." (Engraving by Betsie Vermeulen a granddaughter)".

STANFORD EN OVERBERG VERMEULENS

See this contribution in a document on the Home page of this website.

NON PAREIL